



GAT MONTHLY MEMBERSHIP PROGRESS REPORT

Results as of: 3/31/2023

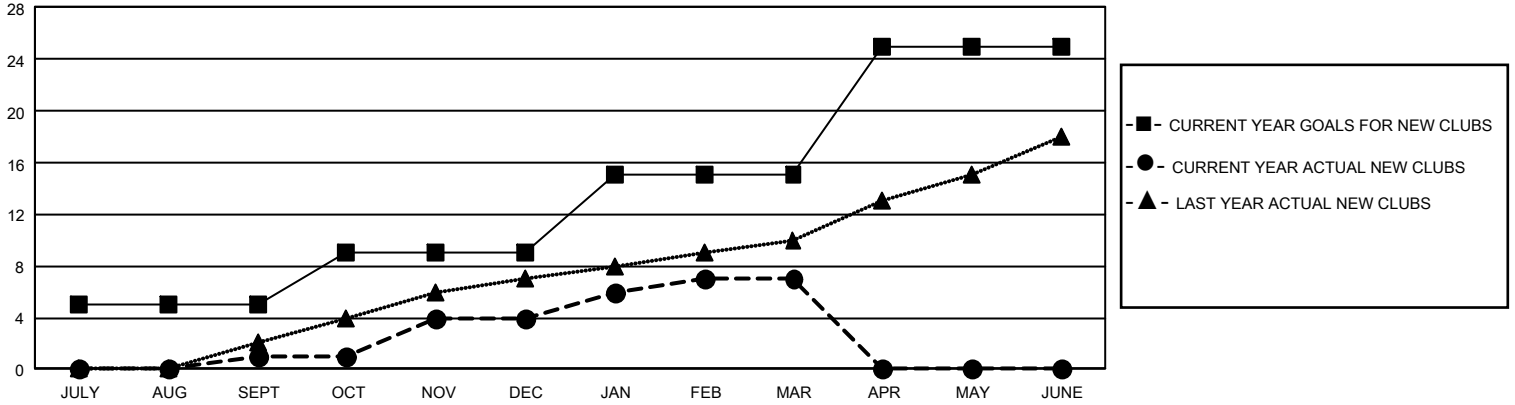
GMT Constitutional Area 4, Group B

REPORT DOES NOT INCLUDE CLUBS IN UNDISTRICTED AREAS.

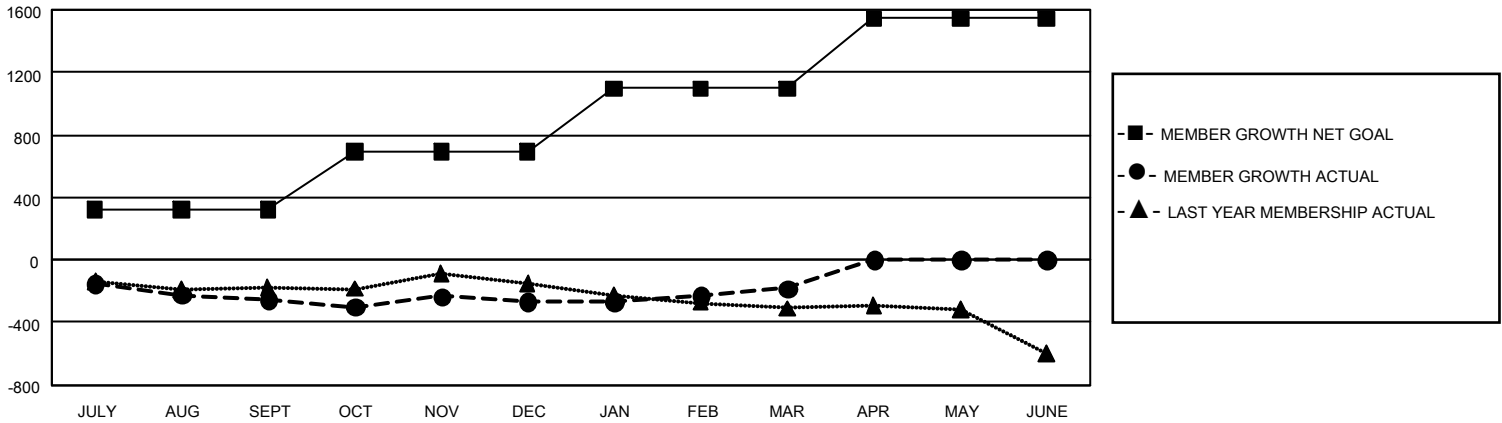
Clubs			
RESULTS FOR 2022-2023			
QUARTER	NEW CLUB GOAL	NEW CLUBS	DROPPED CLUBS
JULY/AUG/SEPT	15	1	4
OCT/NOV/DEC	12	3	2
JAN/FEB/MAR	18	3	3
APR/MAY/JUNE	30	0	0

Members			
RESULTS FOR 2022-2023			
QUARTER	MEMBER GROWTH NET GOAL	MEMBER GROWTH ACTUAL	DROPPED MEMBERS ACTUAL (including transfers)
JULY/AUG/SEPT	322	591	784
OCT/NOV/DEC	368	815	743
JAN/FEB/MAR	407	940	800
APR/MAY/JUNE	449	0	0

GOALS AND ACTUAL NEW CLUBS CUMULATIVE



GOALS AND ACTUAL MEMBERS CUMULATIVE



DROPPED CLUBS: 9	1,135 CLUBS OF 2,124 ADDED 1 OR MORE NEW MEMBERS	GENDER DISTRIBUTION	
		MALE 58,744 (83.60%) FEMALE 11,501 (16.37%) NON BINARY 0 (0.00%) PREFER NOT TO ANSWER 22 (0.03%)	
DROPPED MEMBERS		CLICK HERE FOR CUMULATIVE MEMBERSHIP DATA	
DECEASED 638 CLUB CANCELLED 24 OTHER 1,661 TOTAL 2,323	TOTAL FAMILY UNIT MEMBERS 802 FAMILY MEMBERS PAYING HALF DUES 369		